

# E-LUV 2208



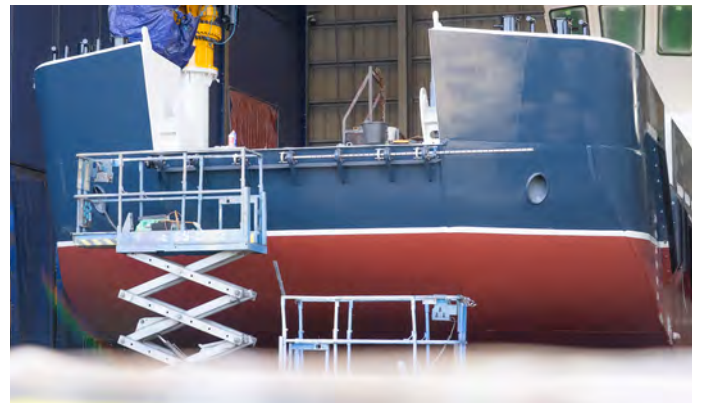
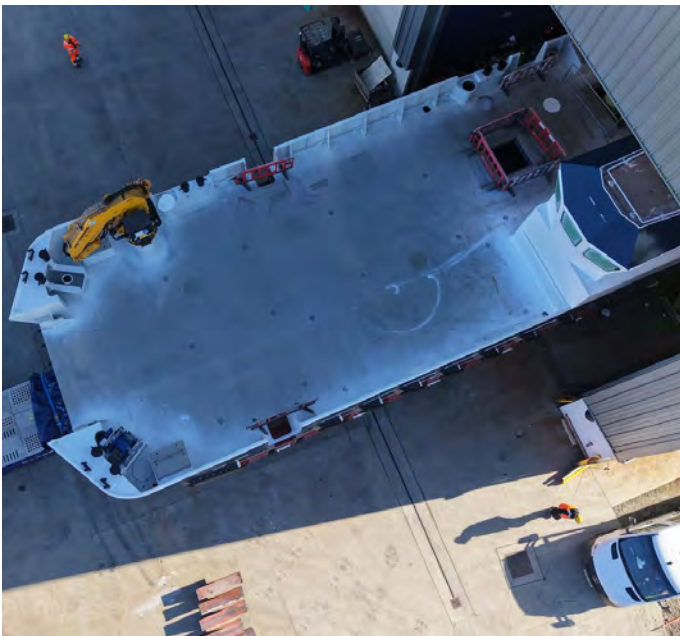
*Fully Electric Landing Utility Vessel*

The E-LUV 2208 is the UK's first fully electric, zero-emissions shallow draught, heavy-duty, commercial landing utility vessel. Built by Coastal Workboats in collaboration with Damen Shipyards, it is a landmark step forward in maritime decarbonisation.

The vessel is approximately 80% complete, with remaining works understood to be limited and primarily related to fit-out. An incoming owner will be required to complete the final build, providing an opportunity to tailor the vessel to specific operational requirements.

## VESSEL SPECIFICATIONS

- Length Overall: 22.3m
- Beam: 8.4m
- Draught: 1.7m
- Deck Area: 120m<sup>2</sup> (2.5t/m<sup>2</sup> deck strength)
- 15mm bottom plate for grounding durability
- 40-tonne capacity bi-fold bow ramp (3.1m width)
- Gross Tonnage: 101 GT
- Deck Cargo: 60 tonnes



# SYSTEMS, CAPABILITY & BUYER USE



## DECK EQUIPMENT

- HS-Marine AK40 deck crane (larger HS-Marine AK72 crane capability)
- 2 x HHP 225kg anchors
- 5-ton capstan
- Diagonal rubber fendering

## SHORE POWER STORAGE SYSTEM (SPSS)

Housed in a 30ft high-cube container with 1,200kWh battery capacity. Designed to draw energy from solar, wind, generators, or single and three-phase shore power.

Provides rapid charging and can act as a mobile range extender, adding up to 50 nautical miles of range.

## BATTERY SYSTEM

Powered by EST-Floatch Octopus High Energy system with 2,400kWh onboard plus 1,200kWh via SPSS. Certified by DNV, BV, LR and RINA.

## OPERATIONAL CAPABILITY

Deck cargo capacity of 60 tonnes. Bow ramp clear width of 3.1m. Tankage includes 1.0 m<sup>3</sup> fresh water and 1.0 m<sup>3</sup> waste water.

## CERTIFICATION

Built to Bureau Veritas and MCA Workboat Code 2, Edition 3 standards. Certified to operate up to 60 nautical miles from safe haven with capacity for 12 passengers.

## APPLICATIONS & BUYER PROFILE

The E-LUV 2208 is well suited to a broad range of commercial and public-sector applications where zero-emissions, particularly the Hydromaster thrusters and MJR integration systems, shallow draught access and heavy deck capability are increasingly critical for a range of operations.

Potential buyers include port and harbour authorities, offshore wind developers, utilities, infrastructure contractors, government agencies, and operators supporting coastal construction, logistics, island services and marine renewables. With advanced electric propulsion, strong cargo and ramping capability, and certification under the MCA Workboat Code, the vessel offers an attractive platform for operators seeking to future-proof fleets against tightening environmental regulation while maintaining operational flexibility and resilience.

## IMPORTANT INFORMATION

**VIEWING:** By Appointment Only

**LOCATION:** Stornoway, Scotland

### Oliver Veart

oveart@gordonbrothers.com

+44 (7825) 819188

### David Swift

dswift@gordonbrothers.com

+44 (7595) 366306



[GORDONBROTHERS.COM](http://GORDONBROTHERS.COM)